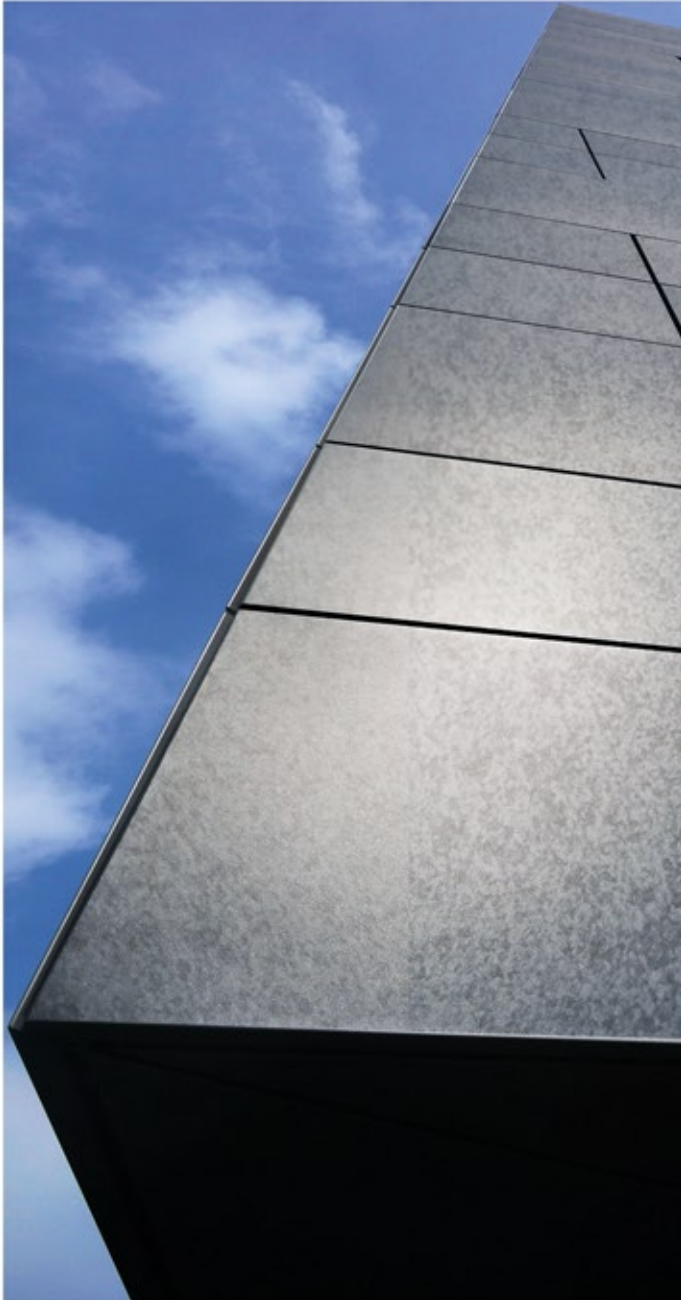




DATA SHEET
PRODUCT
ALUSTONE



ALUSTONE

PRODUCT



ALUSTONE

In this cycle, polyester paints are applied on an aluminum support, obtaining a final appearance similar to natural stone. It is suitable for all internal and external uses and in particular for prestigious coverings.

ALUSTONE

This technical data sheet refers to aluminium substrate product version

TREATMENT

2 stage degreasing + chrome-free passivation

TOP SIDE

BASE COAT: 11-13 micron

INK: 1-2 micron

TRANSPARENT TOP COAT: 17-19 micron

BACK SIDE

BACK COAT: 5-7 micron

TECHNICAL SPECIFICATIONS

TEST	VALUE	REFERENCE STANDARD
thickness	29-34 µm	EN 13523-1 (ECCA T1)
gloss	3-7	EN 13523-2 (ECCA T2)
pencil hardness	F-H	EN 13523-4 (ECCA T4)
resistance to rapid deformation (impact test)	100%	EN 13523-5 (ECCA T5)
adhesion after indentation (cupping test)	100%	EN 13523-6 (ECCA T6)
adhesion after bending at 25°C	0T-1T*	EN 13523-7 (ECCA T7)
resistance to cracking on bending (t-bend test) at 25°C	0T-2T*	EN 13523-7 (ECCA T7)
MEK	>100	EN 13523-11 (ECCA T11)

* in funzione delle caratteristiche del supporto



PRODUCT

UV RESISTANCE CATEGORY: RUV2
ROHS COMPLIANT PAINT



printed on recycled paper